

IRON SPRINGS LANDFILL

2021 PERMIT RENEWAL



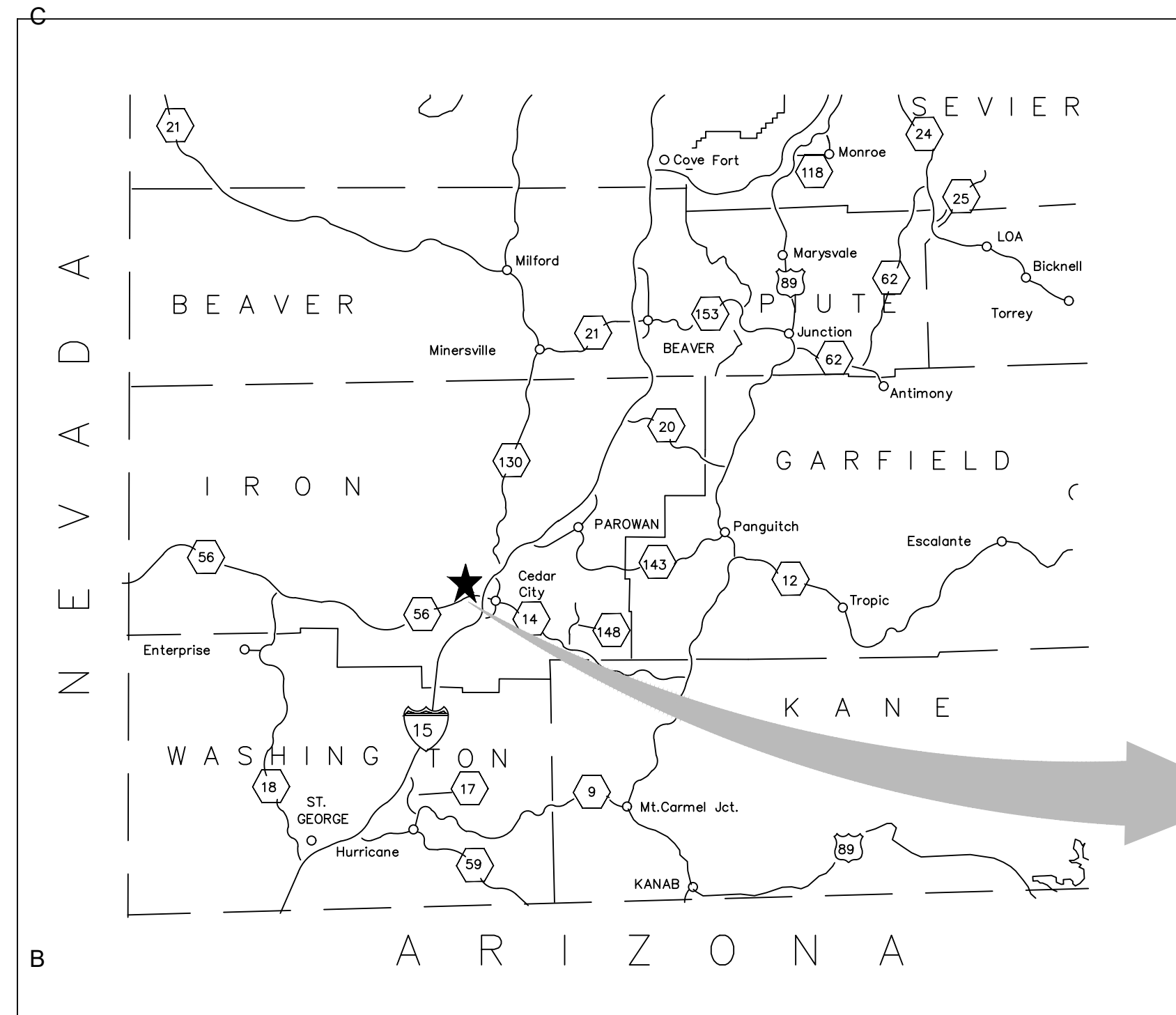
3127 North Iron Springs Road
 Cedar City, Utah 84721
 (435) 865-7015

CONSULTANTS

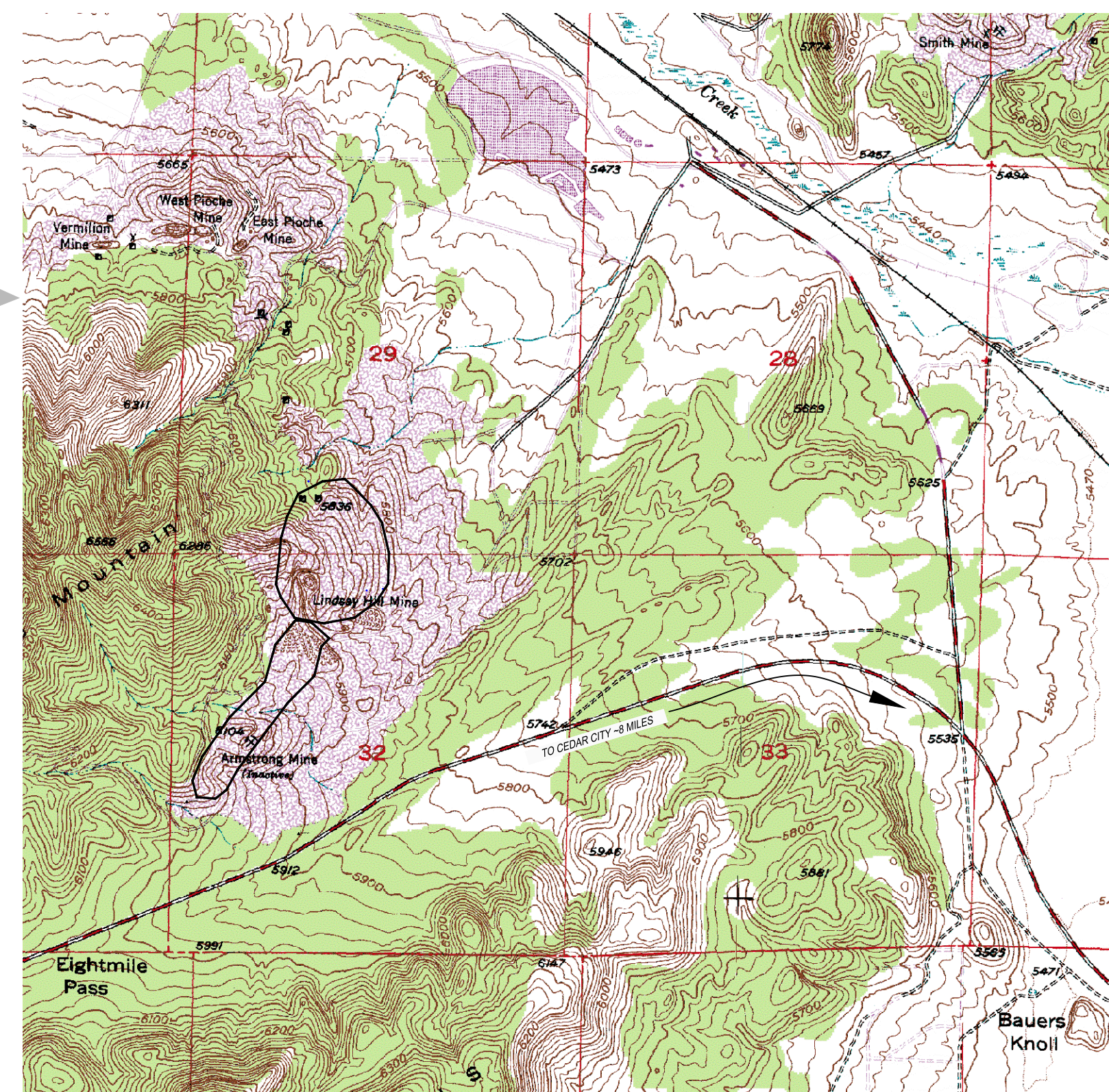


ideas for a changing world

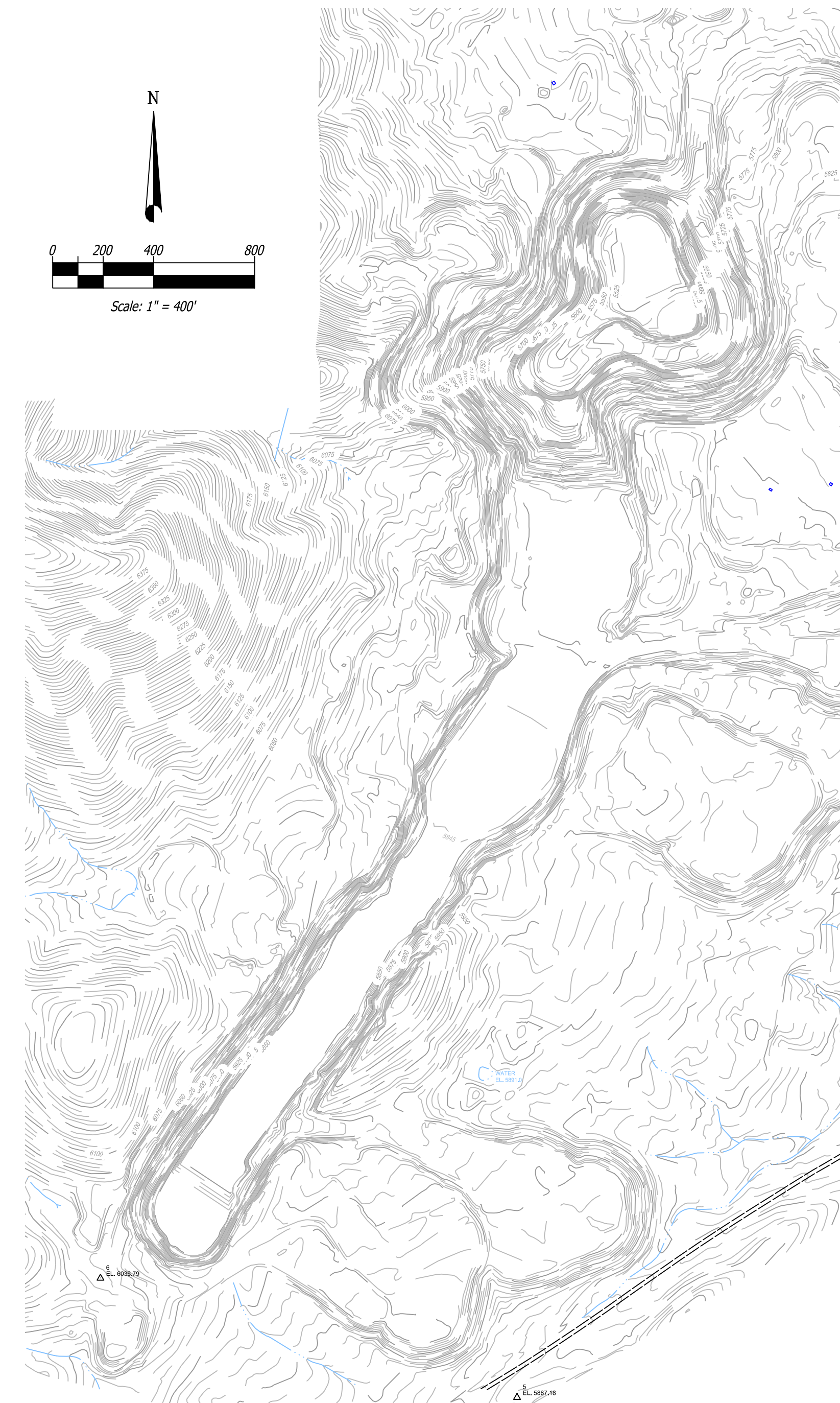
2702 South 1030 West, Suite 10
 Salt Lake City, Utah 84119
 (801)270-9400 www.igesinc.com



SITE LOCATION MAP



SITE VICINITY MAP
 BACKGROUND: USGS 7.5 MINUTE QUADRANGLE (CEDAR CITY NW)



SITE PLAN
 REFERENCE: TOPOGRAPHIC MAP BY ROSENBERG AND ASSOCIATES
 PROVIDED BY CLIENT

SHEET	NAME
1	TITLE SHEET
2	GENERAL ARRANGEMENT
3	FINAL CAP - GRADING PLAN
4	ELEVATION VIEW (1)
5	ELEVATION VIEW (2)
6	DETAILS

MARK	DATE	DESCRIPTION
	05/07/21	ISSUED FOR PERMIT
ISSUE:		
PROJECT NO.:	00454-009	
CAD DWG FILE:	00454\009\iclf (2021).dwg	
DRAWN BY:	JAH	
DESIGNED BY:	BDM	
CHECKED BY:	-	
COPYRIGHT:	IGES 2021	

SHEET TITLE
 IRON SPRINGS LANDFILL
TITLE SHEET

REFERENCE:
 ADAPTED FROM MAP
 PROVIDED BY CLIENT.
 BY ROSENBERG ASSOCIATES



REFERENCE:
ADAPTED FROM MAP
PROVIDED BY CLIENT,
BY ROSENBERG ASSOCIATES



3127 North Iron Springs Road
Cedar City, Utah 84721
(435) 865-7015

CONSULTANTS



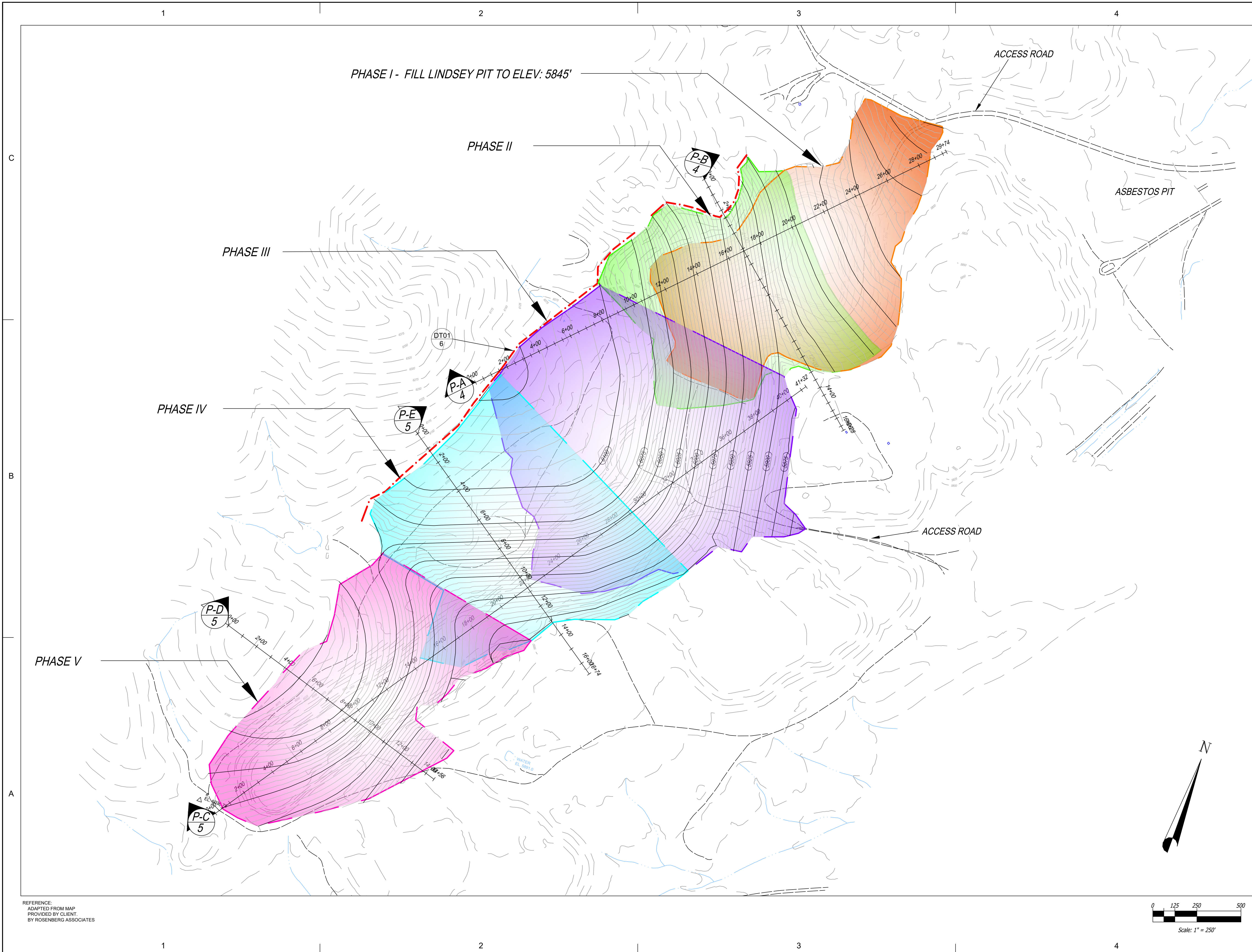
ideas for a changing world

2702 South 1030 West, Suite 10
Salt Lake City, Utah 84119
(801)270-9400 www.igesinc.com

MARK	DATE	DESCRIPTION
	05/07/21	ISSUED FOR PERMIT

ISSUE:	
PROJECT NO.:	00454-009
CAD DWG FILE:	00454\009\iclf (2021).dwg
DRAWN BY:	JAH
DESIGNED BY:	BDM
CHECKED BY:	-
COPYRIGHT:	IGES 2021

SHEET TITLE
IRON SPRINGS LANDFILL
**GENERAL
ARRANGEMENT**



REFERENCE:
ADAPTED FROM MAP
PROVIDED BY CLIENT,
BY ROSENBERG ASSOCIATES



3127 North Iron Springs Road
Cedar City, Utah 84721
(435) 865-7015

CONSULTANTS



ideas for a changing world

2702 South 1030 West, Suite 10
Salt Lake City, Utah 84119
(801)270-9400 www.igesinc.com

TOTAL WASTE CAPACITY:
16,624,686 CYD*

PHASE I: 3,382,996 CYD*
PHASE II: 3,057,831 CYD*
PHASE III: 3,802,029 CYD*
PHASE IV: 2,888,096 CYD*
PHASE V: 3,493,734 CYD*

*WASTE CAPACITY = 75% OF
AVAILABLE AIRSPACE TO
ACCOUNT FOR SOIL USE

--- RUN-ON DIVERSION BERM
SEE DT-01, SH-6

MARK	DATE	DESCRIPTION
	05/07/21	ISSUED FOR PERMIT
ISSUE:		
PROJECT NO.:	00454-009	
CAD DWG FILE:	00454\009\iclf (2021).dwg	
DRAWN BY:	JAH	
DESIGNED BY:	BDM	
CHECKED BY:	-	
COPYRIGHT:	IGES 2021	

SHEET TITLE
IRON SPRINGS LANDFILL
FINAL CAP
GRADING PLAN



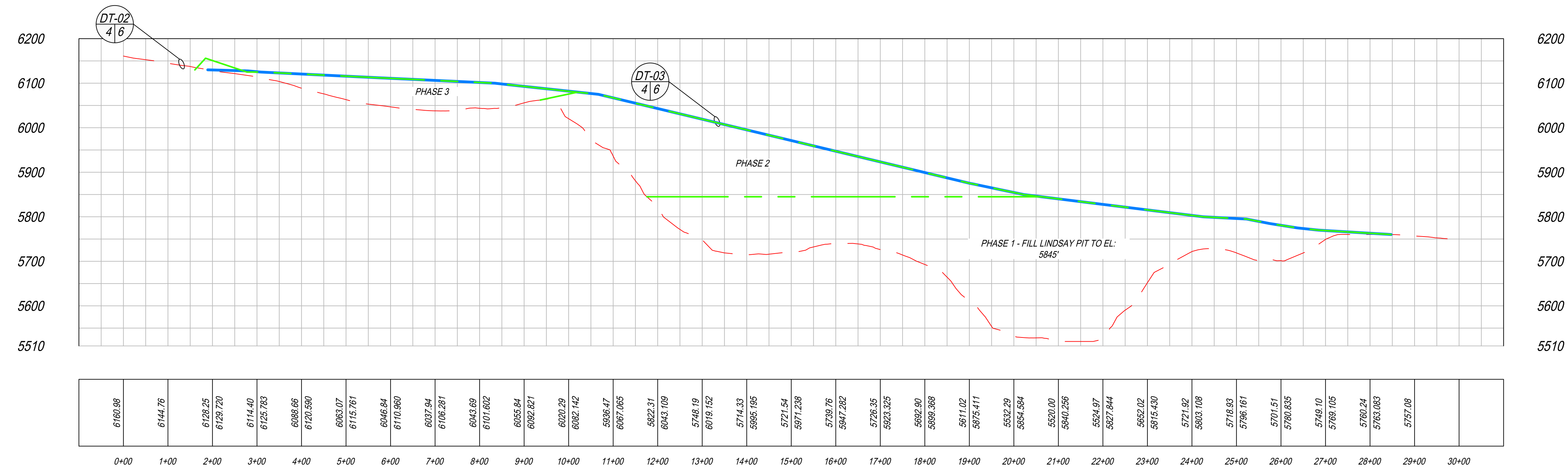
3127 North Iron Springs Road
Cedar City, Utah 84721
(435) 865-7015

CONSULTANTS

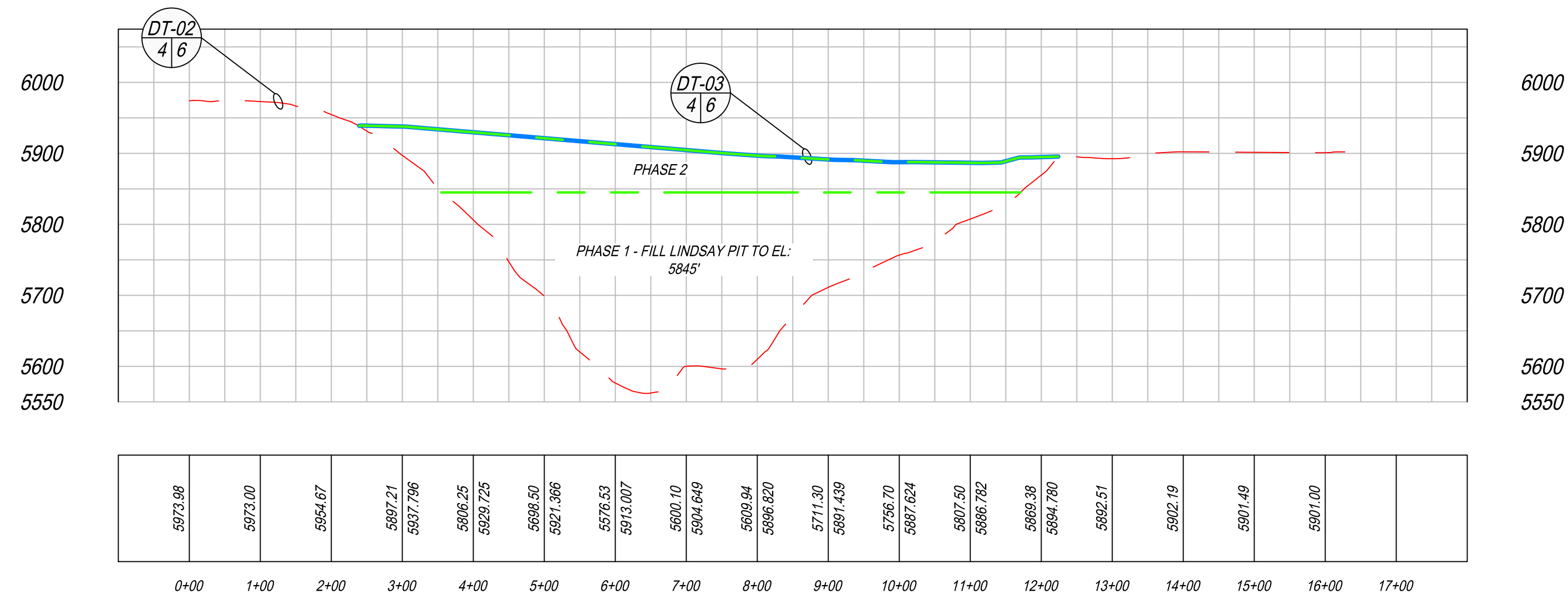


ideas for a changing world

2702 South 1030 West, Suite 10
Salt Lake City, Utah 84119
(801)270-9400 www.igesinc.com

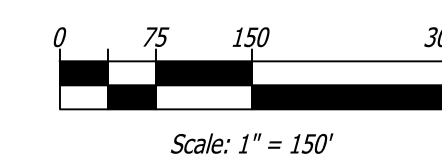


PROFILE-A
SCALE: 1" = 150'



PROFILE-B
SCALE: 1" = 150'

REFERENCE:
ADAPTED FROM MAP
PROVIDED BY CLIENT.
BY ROSENBERG ASSOCIATES



MARK	DATE	DESCRIPTION
	05/07/21	ISSUED FOR PERMIT

ISSUE:	
PROJECT NO.:	00454-009
CAD DWG FILE:	00454\009\iclf (2021).dwg
DRAWN BY:	JAH
DESIGNED BY:	BDM
CHECKED BY:	-
COPYRIGHT:	IGES 2021

SHEET TITLE
IRON SPRINGS LANDFILL
ELEVATION
VIEW (1)



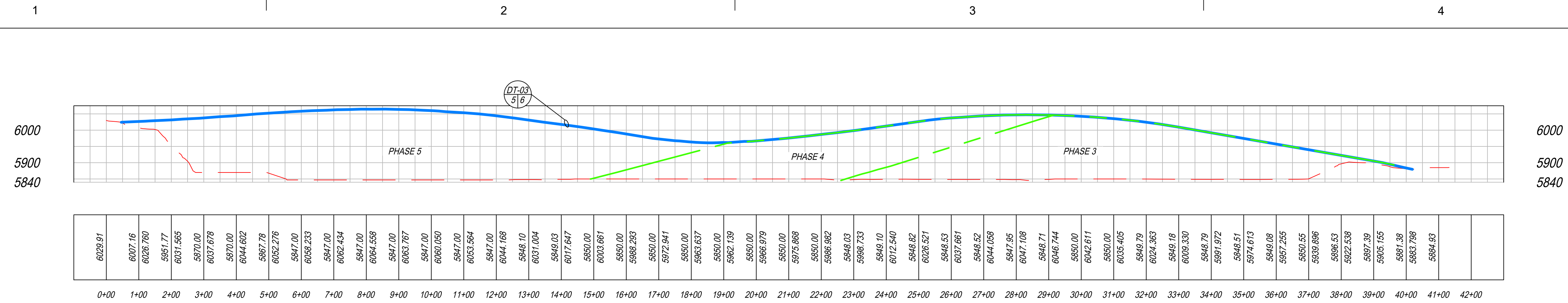
3127 North Iron Springs Road
Cedar City, Utah 84721
(435) 865-7015

CONSULTANTS

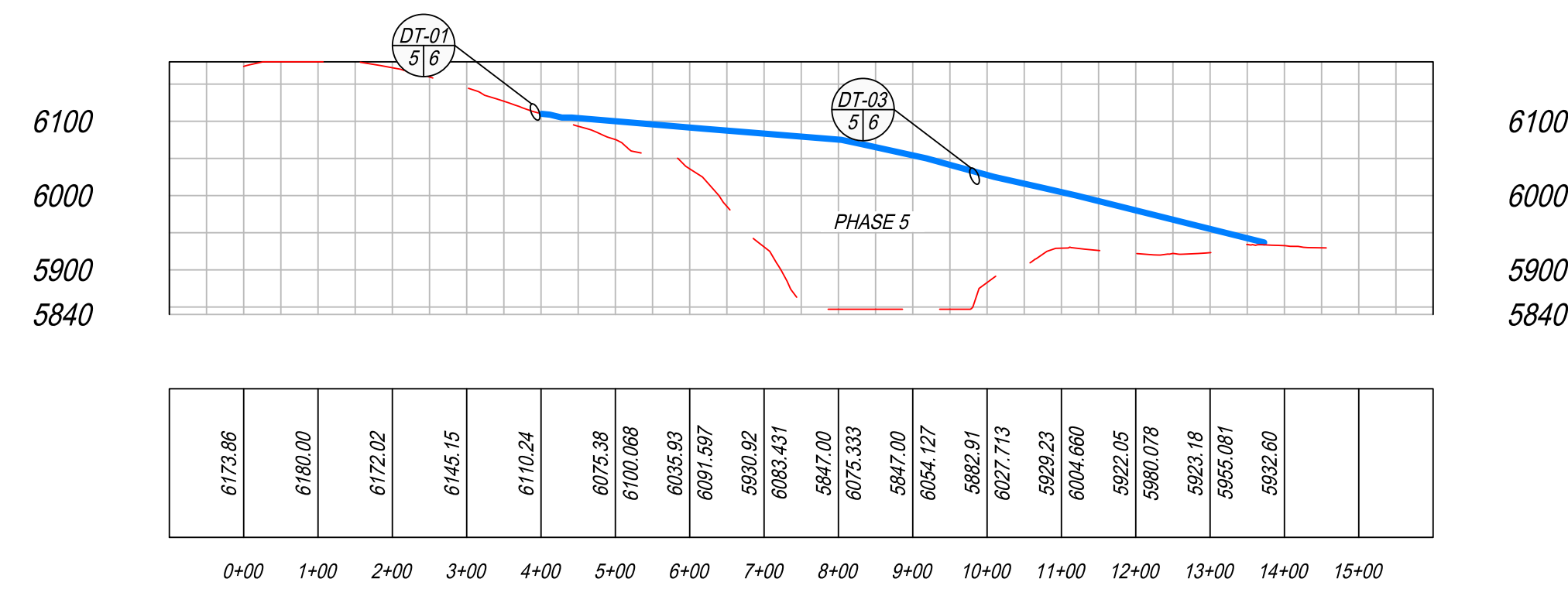


ideas for a changing world

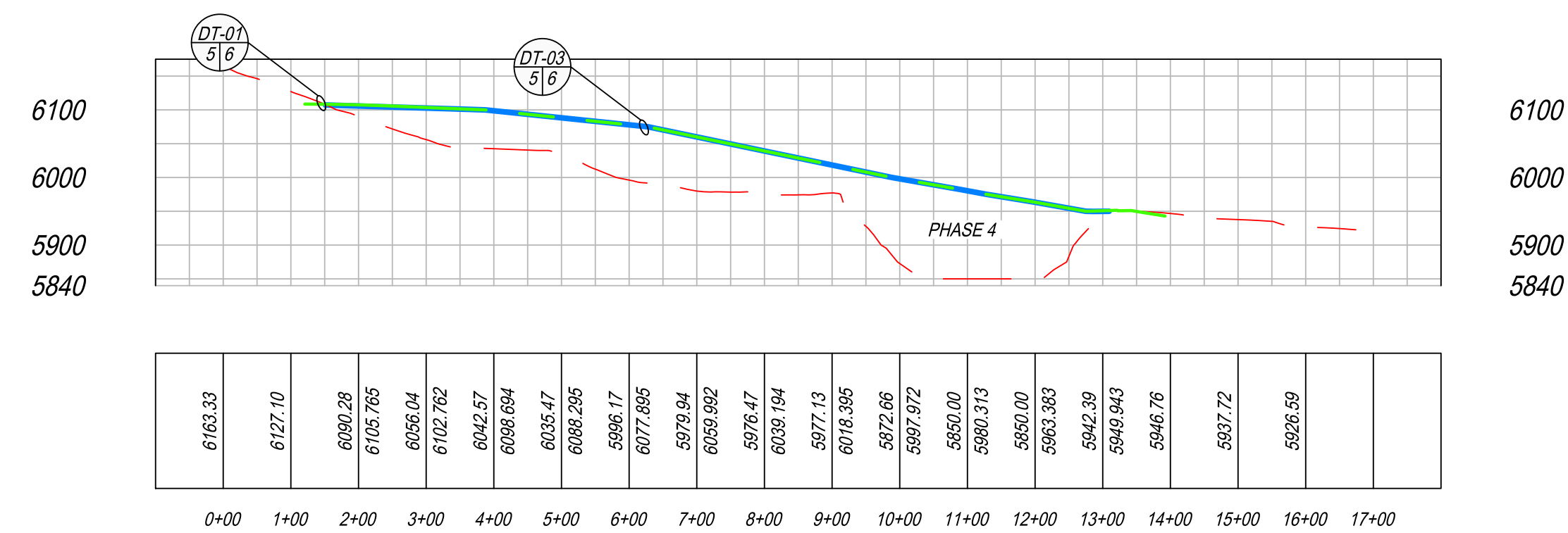
2702 South 1030 West, Suite 10
Salt Lake City, Utah 84119
(801)270-9400 www.igesinc.com



P-C
3
PROFILE-C
SCALE: 1" = 200'

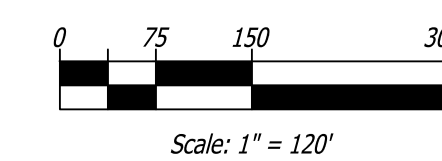


P-D
3
PROFILE-D
SCALE: 1" = 200'



P-E
3
PROFILE-E
SCALE: 1" = 200'

REFERENCE:
ADAPTED FROM MAP
PROVIDED BY CLIENT.
BY ROSENBERG ASSOCIATES



MARK	DATE	DESCRIPTION
	05/07/21	ISSUED FOR PERMIT
ISSUE:		
PROJECT NO.: 00454-009		
CAD DWG FILE: 00454\009\iclf (2021).dwg		
DRAWN BY: JAH		
DESIGNED BY: BDM		
CHECKED BY: -		
COPYRIGHT: IGES 2021		

SHEET TITLE
IRON SPRINGS LANDFILL
ELEVATION
VIEW (2)



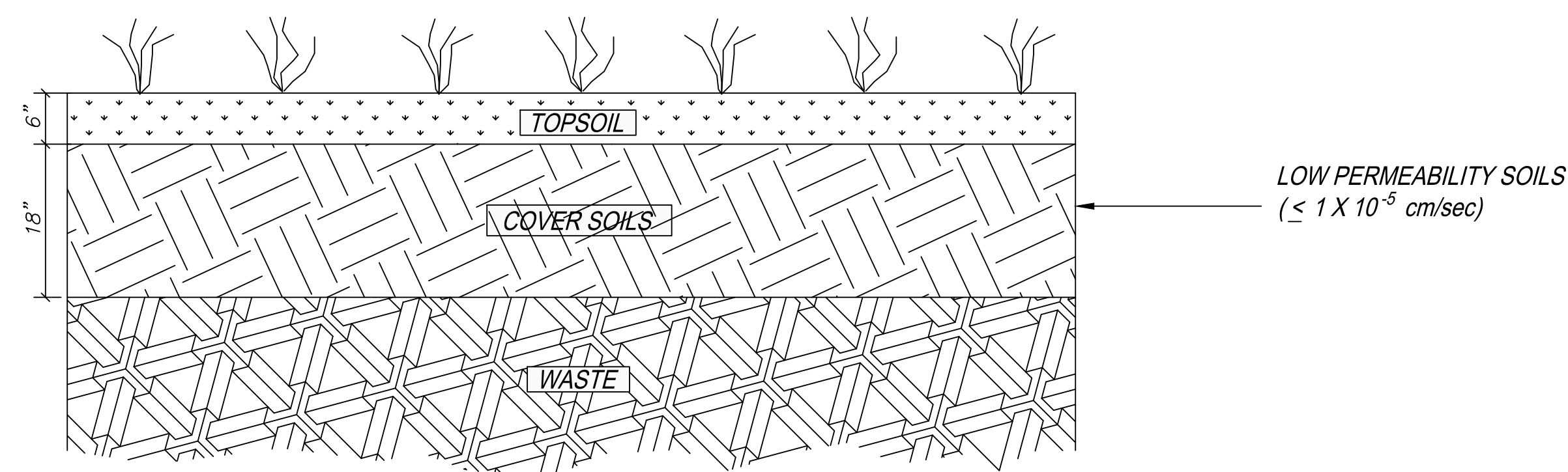
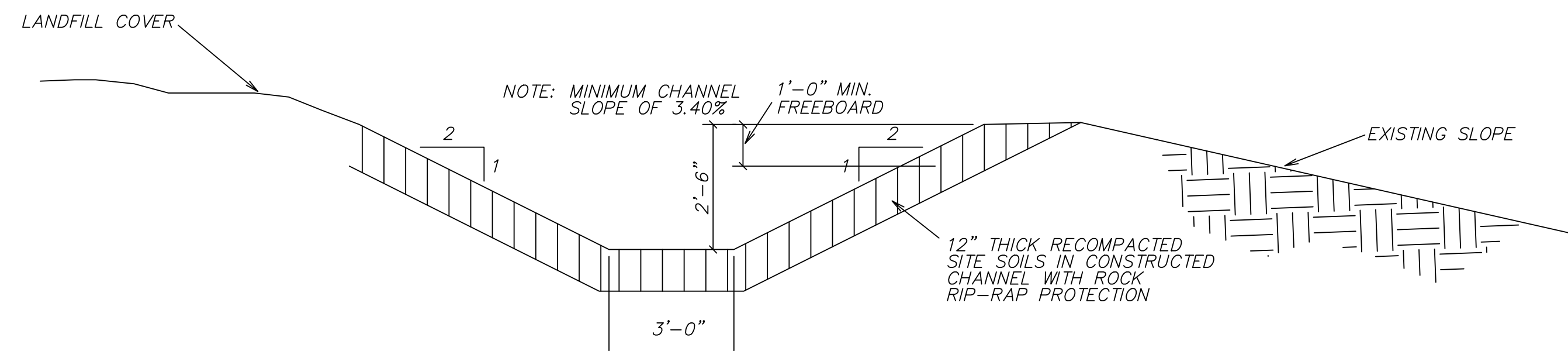
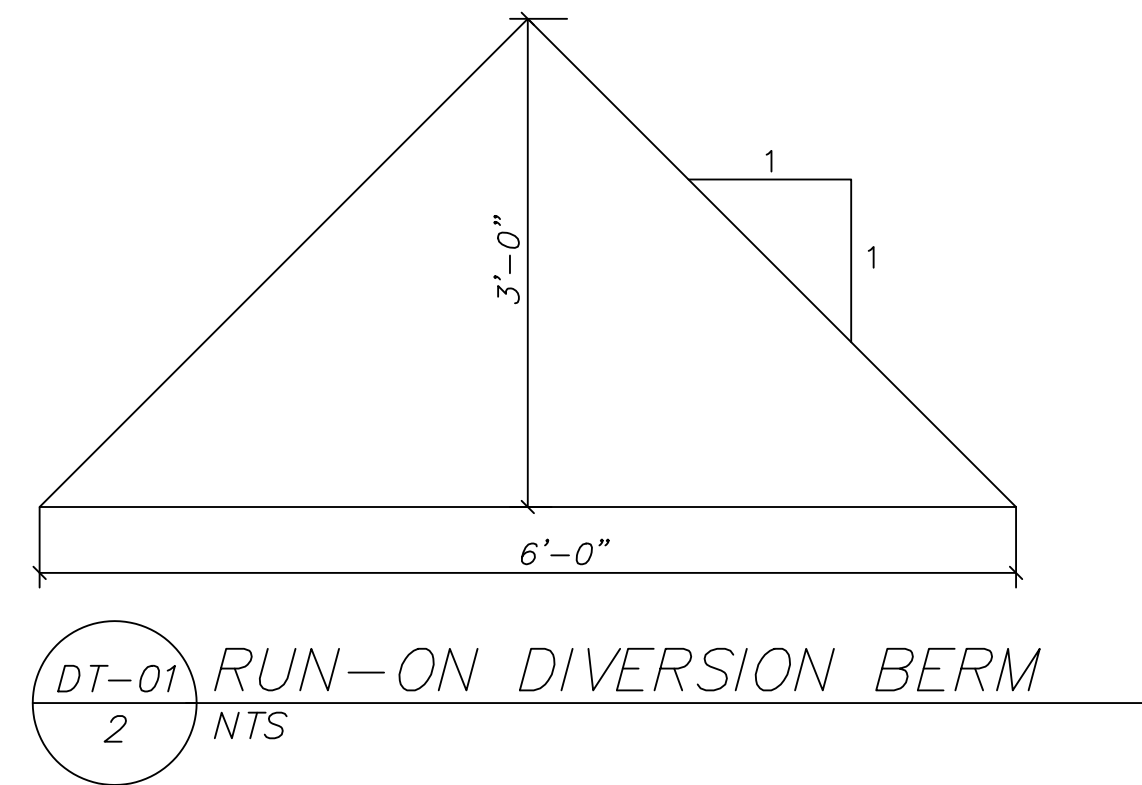
3127 North Iron Springs Road
Cedar City, Utah 84721
(435) 865-7015

CONSULTANTS



ideas for a changing world

2702 South 1030 West, Suite 10
Salt Lake City, Utah 84119
(801)270-9400 www.igesinc.com



MARK	DATE	DESCRIPTION
	05/07/21	ISSUED FOR PERMIT
ISSUE:		
PROJECT NO.:	00454-009	
CAD DWG FILE:	00454\009\iclf (2021).dwg	
DRAWN BY:	JAH	
DESIGNED BY:	BDM	
CHECKED BY:	-	
COPYRIGHT:	IGES 2021	

SHEET TITLE
IRON SPRINGS LANDFILL

DETAILS

REFERENCE:
ADAPTED FROM MAP
PROVIDED BY CLIENT,
BY ROSENBERG ASSOCIATES